

# **SAHARA WELFARE FOUNDATION**

**District Nowsehra, Khyber Pakhtunkhwa, Pakistan**

**Cell : +92 300 9301314**

**Whatsapp : +92 345 9032266**

**[sahara.malakand@gmail.com](mailto:sahara.malakand@gmail.com)**

## **ORGANIZATION PROFILE**



***(We will set up tomorrow)***

# Introduction

*Sahara Welfare Foundation* is a community based Charitable and a Non-profit, Non-Religious, Non-Governmental & Non-Political organization registered under Voluntary Social Welfare Ordinance ACT 1961; under Registration number DSW/NWFP/2936 Dated, 24 July 2008, to fulfill the basic needs of the low income category, and establish a prosperous society filled with moral values, dignity and self-respect. Sahara Welfare Foundation is a national, multi-disciplinary, development oriented and non-profit making organization. Sahara Welfare Foundation affirms to be committed to well-being of masses through empowering vulnerable and under-privileged communities through Climate Change, Sustainable livelihoods, Improved local governance, Social cohesion, and enhanced Resilience to environmental hazards in remote and impoverished pockets of Pakistan in general and Khyber Pakhtunkhwa. Sahara Welfare Foundation is the partner organization of (UNEP South Korea & SAARC Energy Centre Islamabad Pakistan) for implementation of a 10 years' Climate Change Adaptation (CCA) in selected 31 Union councils of 11 districts of Khyber Pakhtunkhwa, Punjab and Sindh. District Chitral, Malakand, Upper Dir, Mardan, Nowshera, Mansehra, Abbottabad, Attock, Sargodha, Bahawalpur and Thatta , Climate Change, Women Empowerment, Cultural, Poverty Alleviation, Environment Development and Conservation, Energy, Human Rights, Education, Community Health Care, Youth Leadership & Empowerment, Micro Finance, Enterprise Development, and Rehabilitation of the differently baled are the key components in our mandate without discrimination & regardless of race, religion, creed or political affiliation. The operation is based on our principles of neutrality, impartiality and independence.

## **VISION:**

Sahara Welfare Foundation envisions a society where everyone has equal access to all above facilities, and Livelihood & Enterprise Development for income generation and exercises their basic rights without discrimination.

## **MISSION:**

The mission of the Sahara Welfare Foundation is to bring together people in wisdom, united in their hearts toward the common goal of peace on Earth. By encouraging public awareness of peace and by building cooperation among individuals and organizations in all fields, including education, science, culture and the arts, we aim to build an international peace network and to stimulate the global trend toward a culture of peace. To ensure accessibility of WASH and Education, Energy, Human Rights, Poverty Alleviation, Youth Empowerment, Micro Finance,

Health services to marginalized segments of the society and improve their socio-economic status for their active inclusion and active participation in mainstream development.

### **GOAL:**

- Promote human rights of women, children, youth, and minorities and seek policy changes for equal rights through advocacy, research and information dissemination.
- Promote Quality of basic Health and Education Services for Hard-to- Reach communities of KP.
- Enhance economic empowerment of low income people especially women and youth through skills, Education and livelihood programs and enterprise development.
- To promote quality education through formal and non-formal & adult literacy programs.
- To enable accessibility of disadvantaged communities to health, water and sanitation
- Promote peace and conflict resolution through coordinated efforts of community, government and civil society organizations.
- Respond to humanitarian emergencies by helping people cope with crisis, through disaster risk reduction, emergency relief, preparedness and post-crisis recovery.

### **Approach**

Our approach is based on the principle of participation, cooperation and coordination of target communities and local administration to fill the state-citizen gap in service delivery. We work hand-in-hand with local activists, local leaders, local partners, and national and international organizations to give women, youth and children opportunities that they need to improve their lives, families and communities.

### **Cross cutting themes**

- Human and institutional development
- Environmental conservation
- Human rights assurance
- Peace and harmony
- Poverty alleviation

- Social and behavioral transformation

### **Operational areas**

Sahara Welfare Foundation operates in Khyber Pakhtunkhwa Pakistan.

### **Our Main Thematic Areas/Deliverables**

#### **1. Social Development**

- Awareness Raising about & Promotion of Human/Women Rights
- Protection & Representation of Marginalized Groups
- Promotion of Gender Equality/ Gender Mainstreaming
- Promotion and preservation of indigenous cultural heritage

#### **2. Services Provision via following Right Based approach**

- Provision of Health and Hygiene Education
- Provision of Primary, Reproductive, basic Health Care Services
- Provision of Non Formal Basic Education School for girls
- Community based Infrastructure Development

#### **3. Economic Empowerment of Women, Youth & Special Abilities via Sustainable Livelihood Approach**

- Facilitation of Micro enterprises and Finance schemes
- Provision of Technical and Vocational Trainings
- Farm & Non Farm Livelihood Development Programs
- Marketing via established outlet based in District Malakand KPK titled "SHOP for a CAUSE" Networking of home based working

#### **4. Good Governance Promotion**

Human, organizational and institutional development (HOID) Political Representation Participation Promotion Program (PR3P) Peace and Development

#### **5. Strengthening of various government line departments at districts level**

- Disaster Preparedness & Management
- Relief & Emergency Assistance
- Rehabilitation and Restoration of Community basic infrastructure & Livelihood system
- Provision of Community Based Disaster Risk Management (CBDRM) Trainings

#### **6. Disaster Preparedness & Management**

- Watershed Management
- Plantation and Nursery Raising
- Cash Crops Value Chain Development
- Construction

## **Governance Structure**

### **Sahara Welfare Foundation Organizational governing structure**

#### **General body**

General body is the supreme body of Sahara Welfare Foundation, which is comprised of 30 (20 Females and 10 males) members with the gender composition of 70% female and 30% male representation. General body works on permanent basis and members of general body can be replaced after every three years. All the decisions of board of Governors are subject to approval of this forum. General body meets once in a year except emergency meetings. The role of

general body is to review all the decisions and policies made by board of Governors, financial position, organizational reputation and development status. General body elects board of Governors members through election after every three years. It has the power to terminate or replace any of the board of Governors members according to rules.

### Board of Governors

Board of Governors is the main body of the organization consisting of 7 members (4 female & 3 male) elected by the general body for every three years. The board is responsible for the overall planning, policy and procedures, progress review, compensation approval, purchasing approvals, yearly financial budgeting, committee's formation for different matters and to keep check and balance within the organization's systems. The board monitors and reviews the performance of the executive director. The board meets on quarterly basis and review the organizational progress. Members of the board can visit/ monitor any of the project sites without prior notice. Operational level powers and authorities are delegated by the board to the Chairman for the smooth implementation of the organizational operations. It is also responsible to resolve conflicts among the staff, other stakeholders and beneficiaries.

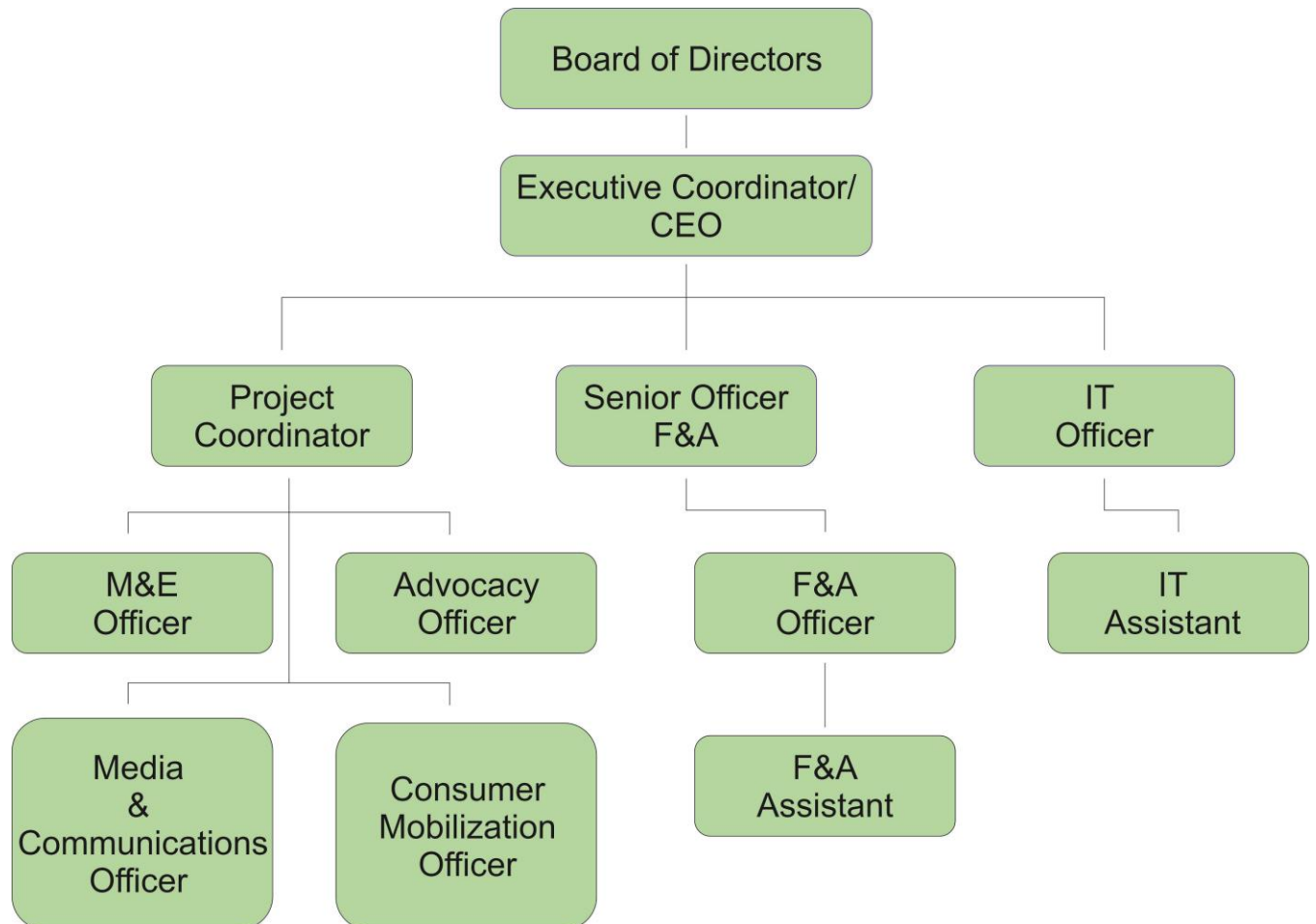
### Chairman

Chairman is the most responsible position in the organization. She/he is responsible and accountable to both the general body and Board of Governors. She/he is responsible to implement all the policies and procedures made by the Board of Governors with the support of management staff. Chairman is responsible for the management, implementation, monitoring and evaluation of all the projects and programs. She/he gives most of the operational and financial approvals. Small size of purchasing, procurements can be made by the approval of the Chairman. She/he is the chairperson of purchasing, procurement and hiring and firing committee. The Chairman has the authority to punish any of the staff members for violating organizational rules and regulations.

### Management level staff members

Manager , Manager Liaison, Manager admin & Finance, Manager Program, Program Officers, admin & finance officer are management level staff members and responsible to assist Chairman and to their respective line managers in the planning and operations of programs of the organization. They are selected by the hiring committee with the recommendation of the Chairman and responsible for their jurisdiction according to rules and regulations and their job descriptions.

## Organ gram of Sahara Welfare Foundation





## **FOUNDATION STRUCTURE**

The General body member elects the cabinet consisting years. The election is held under the supervision of Social Welfare Officer concerned. The members of the general body are as under:

1.	President	2.	Voice President
3.	General secretary	4.	Joint Secretary
5.	Press Secretary	6.	Finance Secretary
7.	Religious Secretary	8.	Health Secretary
9.	Education Secretary	10.	Sports & Culture Secretary

## **Sectors**

Sahara Welfare Foundation provides cost-effectives relief and development programs in five core sectors and Special Projects as needed.

### **(1) CIVIL SOCIETY: (Equipping and Sustaining Community Life)**

Civil Society goes hand-in-hand with community development and relates directly to all of Sahara Welfare Foundation activities around the country. Civil society, initiatives help people and local organizations at the grassroots level build teamwork, organizational capacity, and interest in community development.





**International Planning Workshop**  
**on**  
**WATERSHED MANAGEMENT AND LAND REHABILITATION NORTH WEST FRONTIER REGION, PAKISTAN**

Pakistan Academy of Sciences Islamabad

December 06-08, 2010

**Organized by:**

National Center of Excellence In Geology, UoP

**Sponsored by:**

United States Department of Agriculture Higher Education Commission, Pakistan



**(2) ECONOMIC DEVELOPMENT:**  
**(Providing Opportunities and tools to build Livelihoods)**

Economic Development Programs Promote the capacity of individuals and communities to protect lives, respond to recurring disasters, and strengthen human capital investment. Sahara Welfare Foundation Focus on Sustainable agriculture, Livelihood Security, Micro-Enterprise Development and Local Economic Planning.







### **(3) FOOD SECURITY:** **(Improving nutrition, Food Access and Availability)**

Food Security Programs work to provide continued access to nutrients for the country most vulnerable groups. Sahara Welfare Foundation is a leader in using food commodities to develop and Support Production and distribution of fortified soy-enriched foods, thereby contributing to increased food availability, access, and utilization for vulnerable population around the country.

**(4) INFRASTRUCTURE:**  
**(Strengthening the Building Blocks of Communities)**

Sahara Welfare Foundation infrastructure programs provide buildings, water, sanitation, electricity, road and other systems to vulnerable communities. Sahara Welfare Foundation works with local communities to identify needs and in partnership with local governments develops sustainable plans to address those needs.







**(5) HEALTH:**  
**(Bringing Critical Health Skills and Services to Communities in Crises)**

Sahara Welfare Foundation Health Team Develop both long-term programs and immediate interventions in order to address the Complex Health Care needs of vulnerable populations. Sahara Welfare Foundation Implements Programs to promote maternal and Child Health, Fight against HIV/Aids, and build health care infrastructure









# PDMA/PaRRSA

PROVINCIAL DISASTER MANAGEMENT AUTHORITY  
Provincial Reconstruction, Rehabilitation & Settlement Authority  
Civil Secretariat, Peshawar  
Phone: (091)9211854, Fax: (091) 9214025  
[www.pdma.gov.pk](http://www.pdma.gov.pk)



## Annex A- No Objection Certificate

### NO OBJECTION CERTIFICATE

1. In pursuance of expression of interest submitted by the Organization(s) mentioned in (2) the Provincial Disaster Management Authority PDMA, is pleased to issue No Objection Certificate to your organization on following terms;

- A. Name of organization applying for NOC Sahara Welfare Foundation
- B. Project applied for: Introduction and promoting energy efficient cooking stoves(EECS) fir in flood affected areas.
- C. Plan under which PROJECT falls: NON-PHRP (Post-Crisis) Early Recovery
- Relevant Cluster(S): ENERGY
- D. Areas of intervention: Malakand
- E. Name of IPs: —
- F. Project starting and closing date: from 27-04-2011 to 30-07-2011 ( 3 Months)

And that organization is allowed to work until the validity period issued by PDMA

2. NOC is extendable subject to satisfactory performance.
3. The Organizations operation in the specified area shall be in accordance to TORs.
4. Monthly progress and all other required reports shall be submitted in line with the Reporting guidelines provided in.
5. Date 04-05-11

  
Director  
(Relief, Operations & Coordination)

  
Director General  
PDMA/PaRRSA

Cc: District Coordination Officer Malakand.

## **AIMS & OBJECTIVES OF THE FOUNDATION**

- 1) Reconstruction & Rehabilitation Sustainable Agriculture, Livelihood Security at Khyber Pakhtunkhwa, Pakistan.
- 2) Enrolment of Khyber Pakhtunkhwa Pakistan families / Youth (Male / Female) for training at various fields.
- 3) To trained youth (Male / Female) in different trades and skill, participate in the Government Technical Assistance / Rehabilitation program.
- 4) To provide educational facilities and vocational training for the peoples of Khyber Pakhtunkhwa Pakistan with the help of concerned departments, Agencies / Organizations.
- 5) To provide job opportunities for the peoples of Khyber Pakhtunkhwa, Pakistan in social and industrial sector.
- 6) Linkages and co-ordination with the concerned department and agencies / Organizations.
- 7) Organizing Training / Seminars / Workshop and symposium on different topics for advancement of the people of Khyber Pakhtunkhwa, Pakistan in different field.
- 8) Involvement the people of Khyber Pakhtunkhwa, Pakistan in community up-life programs and positive activities.
- 9) To give aid to effected people in the time of danger and natural disaster.
- 10) To secure the income to those helpless widows who cannot bear their domestic expenses.
- 11) To provide legal aid (Assistance) to the needy people, for example widow or women from broken families.
- 12) To struggle for the People of Khyber Pakhtunkhwa Pakistan rights national and

international level.

Project: Revival of Indigenous Cultural Heritage {RICH} from Directorate of Culture,  
Government of Khyber Pakhtunkhwa 2017

## **Activity Title & Descriptions**

### **{1} Indigenous Music**







## {2} Interactive Theater







### {3} Literary Circle Mushaira





#### {4} Folk Dance



## {5}Handwork/Handicrafts Exhibition of Local Females Artisans



## {6} Capacity Building Training on Visual Art & New Media, Story, Film Drama Writing



**Bakht Muhammad,**

**Chairman**

**Sahara Welfare Foundation, 2<sup>nd</sup> Level, Gujjar House, Kot Road,  
Opposite Rahat Corporation Dargai, District Malakand , Khyber  
Pakhtunkhwa, Pakistan**

**Office Land Line: +92 932 505399**

**Cell: +92 300 9301314**

**Whatsapp: +92 345 9032266**

**[sahara.malakand@gmail.com](mailto:sahara.malakand@gmail.com)**